

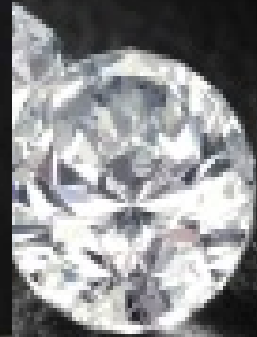
A collection of approximately ten diamonds of various cuts, including round brilliant, oval, and pear shapes, are scattered across a dark, textured surface. The diamonds are illuminated from the side, creating bright highlights and deep shadows that emphasize their facets and clarity. The background is a dark, almost black, textured material that provides a stark contrast to the brilliant white of the diamonds.

Elegant for your life

For your personal jewelry

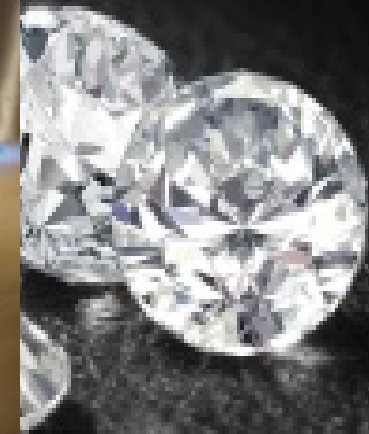
**The tender lines
highlight her
beauty**





**The soft light makes you enjoy
the moment**

Handcrafted custom designed jewelry and watch interior and each drawer is uniquely configured to store your particular collections.



The name plate shows your brand value

Specification

Product size: H445*W460*D350mm

Door & Body Steel Thickness: 8 & 3 mm

The safe construction is accordance with the European burglary protection level S1

AIPU High-end finger print lock

The door is secured by 3x25-diameter locking bolts

Body consists of two steel plates filled in between with a fire resistant material





The other jewelry safe in market will charge you several thousands USD and more~

It's Only 320 USD



It belongs to you

