

SX-680

**Far greater performance
In much less space**

**With up to 20,000 product lines
and scanning,
SX-680 gives
independent retailers
EPOS capability
at ECR price**



Choice of scanners



Shown without
cash drawer

SX-680 operates

- Completely stand-alone
- With inter-register communication for consolidated reporting
- Linked to Geller Software for simple sales reporting and/or full inventory control



Option of raised button keyboard

**SMART ECR SYSTEMS
THAT DO MORE - COST LESS**

SX-680 is loaded with innovative features for today's retailing environments. Even inter-register communication is a standard feature.

Silent, Speedy Printing with Graphic Logo

The printer is noiseless and very fast. Your company logo or special design can be printed on each receipt. There is no ribbon to replace or fade, so receipts of the same exceptional clarity are produced every time.

Low Cost of Ownership

SX-680 is reliable by design so service costs are kept to a minimum. There are no ribbons to change. Its 'Drop and Load' 58 mm printer makes changing paper rolls easy and eliminates paper jams. You can choose to print receipts automatically for each transaction or save paper by printing, on request, after the sale.

Protecting your Investment

SX-680's flash memory technology means that, as your business grows or your requirements change, your Dealer can upgrade your SX-680s to the latest specification via a plug-in program loader.

Inter-register Communication (IRC)

Up to 8 Models SX-680 can be linked by 'Click and Connect' telephone style plugs for consolidated management reporting. Price, product and program changes made on one SX-680 are automatically sent to all SX-680s in the network.

Bar Code Scanning

SX-680 allows automated entry of bar coded items and a simple procedure for entering product prices and descriptions. First time users can enter products by following the simple 'on-screen' prompts.

Bar Code Learning

When items not on the system are scanned for the first time, SX-680 'learns' the barcode, requests entry of the price and stores the information for future recognition.

Shelf Edge Labels

The SX-680 automatically generates shelf edge labels when new products are entered on the system or when prices/product descriptions are changed.

Price Check

Pressing the Price Check Button, prior to scanning, displays the price without registering it. Price Check is useful for customer queries and checking that your shelf edge label price matches your correct selling price.

Multi Buy/Mix and Match

Items may be discounted when a certain quantity is bought. Additionally, mixed item promotional offers can be created.

Automatic Re-Order by Supplier

Up to 99 suppliers by name can be held in the SX-680's memory. Products falling below your minimum stock level automatically print on the Re-order Report.

Manual Re-Order by Supplier

If you notice that you are running low on a product, you can manually add to the re-order list - even part way through a sale - by pressing the Re-Order Button prior to scanning the item.

Non-Movers

A Non-Movers Report allows you to see the products you no longer sell. You can maintain the efficiency of your system by deleting non-movers individually or all at one time.

Powerful Reporting for Management

A wide choice of Management Reports is available from each SX-680 and, in the case of linked systems, from the master terminal. Alternatively, clear, concise Management Reports in graph and/or table format are available via Geller software.

Stock Control

The SX-680 consolidates sales across its standard IRC network, so that sales made on any SX-680 in the system decrease stock levels on the master terminal.

A range of software is available for use with the SX-680 -

David Utility is an ECR maintenance program. It changes and backs up staff and product names and prices. *David* operates in-house or via modem for remote sites.

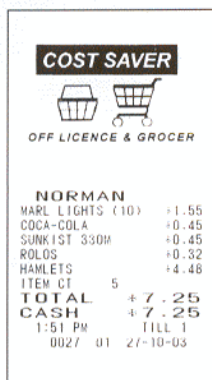
David Sales Manager is a low-cost yet sophisticated reporting program that produces clear, concise management reports in graph and/or table format. *David Sales Manager* works in-house or multi site with no limit on the number of ECRs or sites.

SAM Version 6 is a single or multi site sales and management reporting program with profit maintenance. Data can be exported to other software packages such as Excel. *SAM* can be upgraded to *SuperStock*.

SuperStock Version 6 is sophisticated inventory control software, single or multi site with bar code labelling and full purchase order processing.

Hardware Features

- Alphanumeric displays for customer and server
- Choice of raised button or flat keyboard
- 2-station 58 mm heavy-duty thermal printer
- Easy 'Drop and Load' paper roll change
- 3 RS232 ports for PC, scanner, etc.
- IRC for up to 8 Models SX-680 as standard
- 8,000 Price Look Ups as standard. Option of 20,000
- Low profile design with option of remote cash drawer
- Flash memory with 'plug in' upgradeability



Authorised Sales and Support Dealer

DONOVAN SALES LTD.
Since 1903
1135 East Hastings Street
Vancouver, British Columbia
Canada V6A 1S3

Telephone (604) 254-4777
Facsimile (604) 254-3771
www.donovan-sales.com

